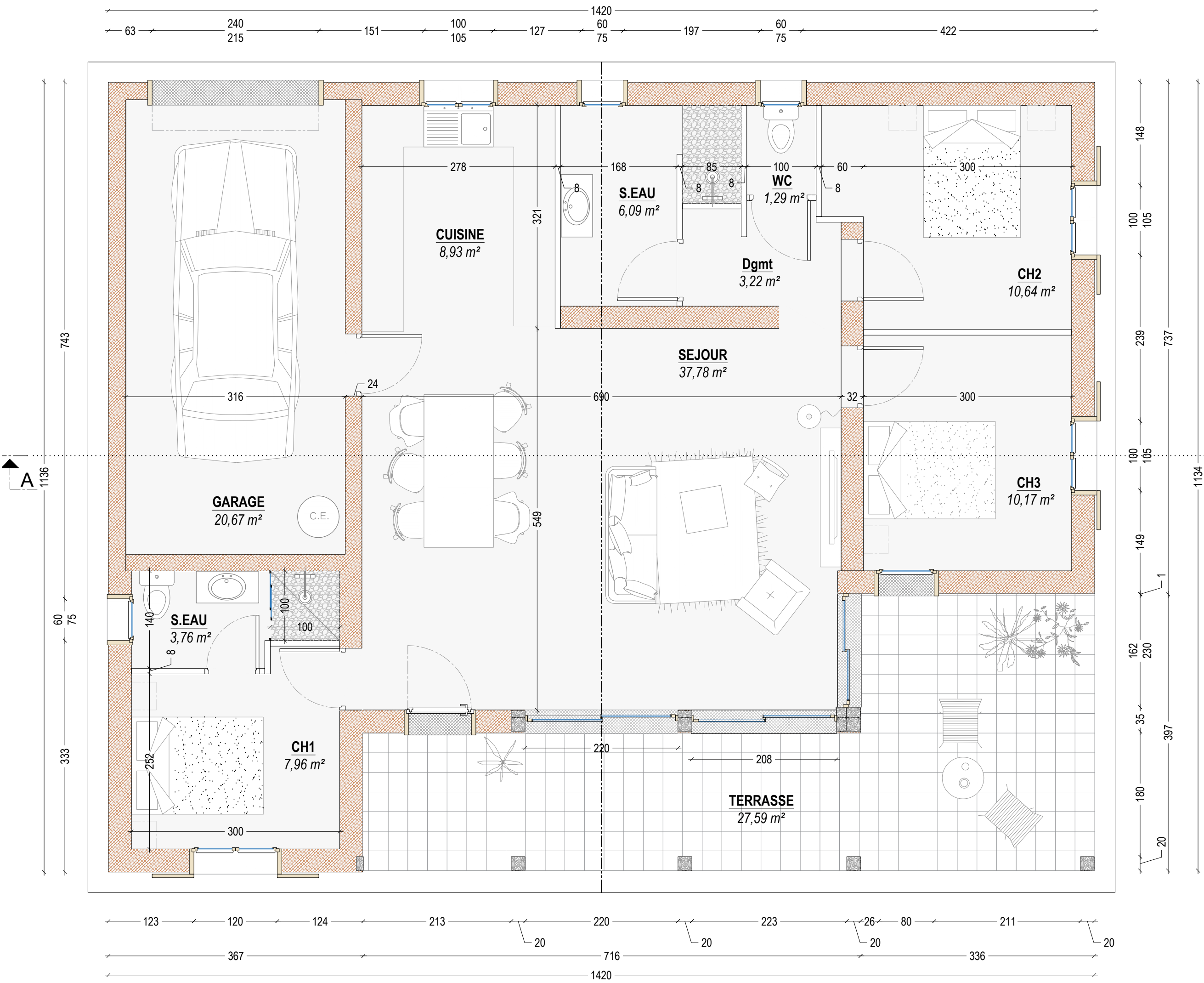


GIRONDIN

Chalet type girondin 3 chambres avec garage

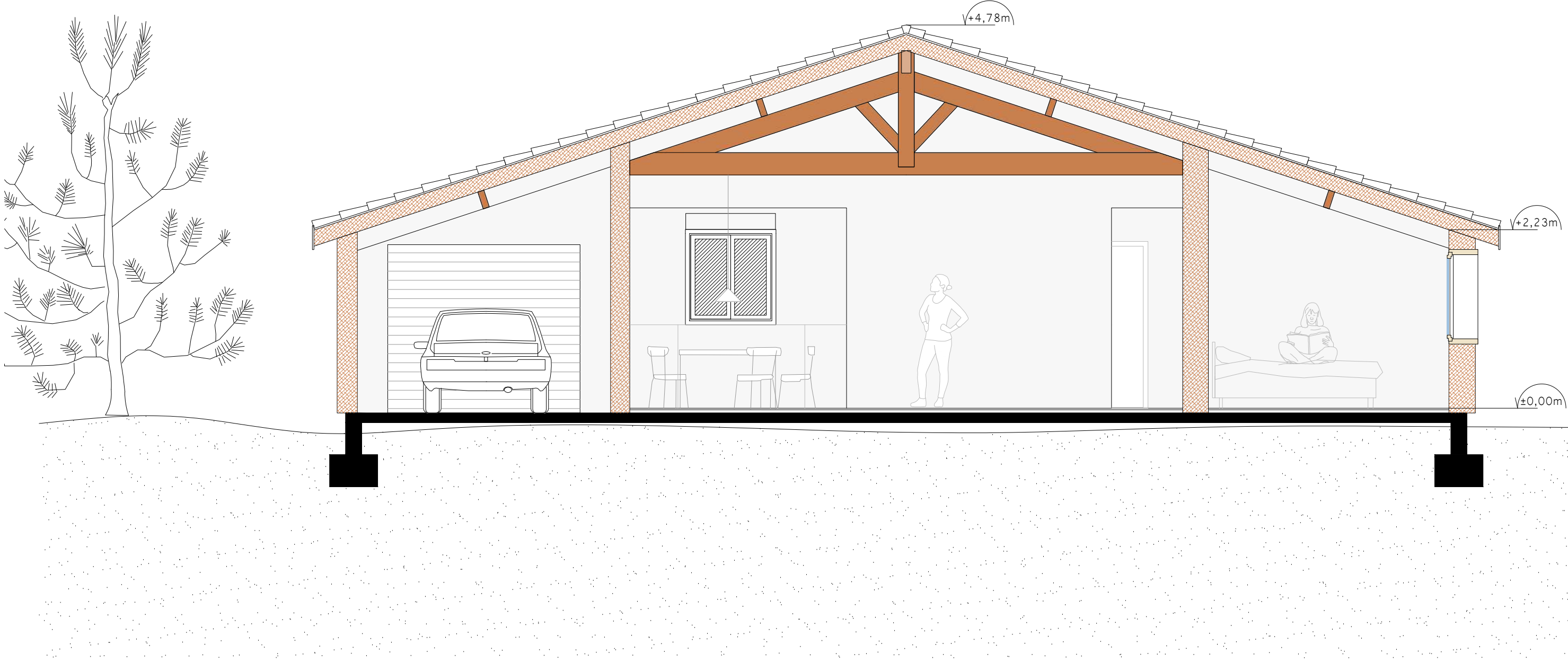


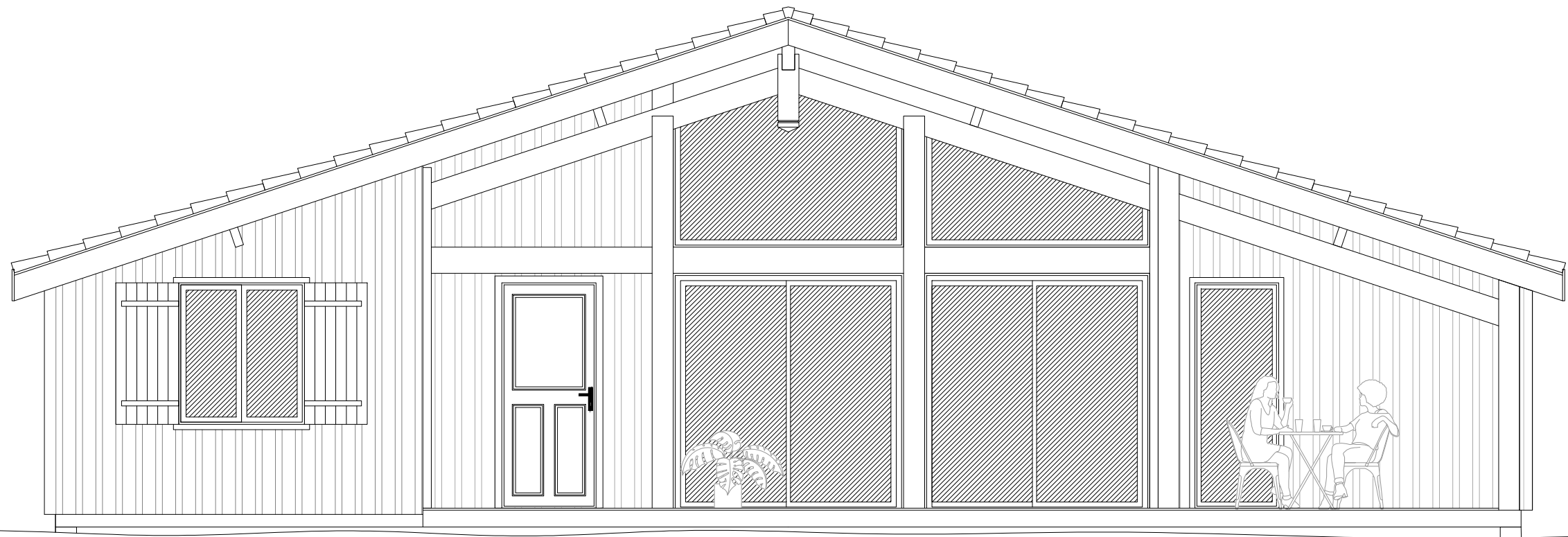




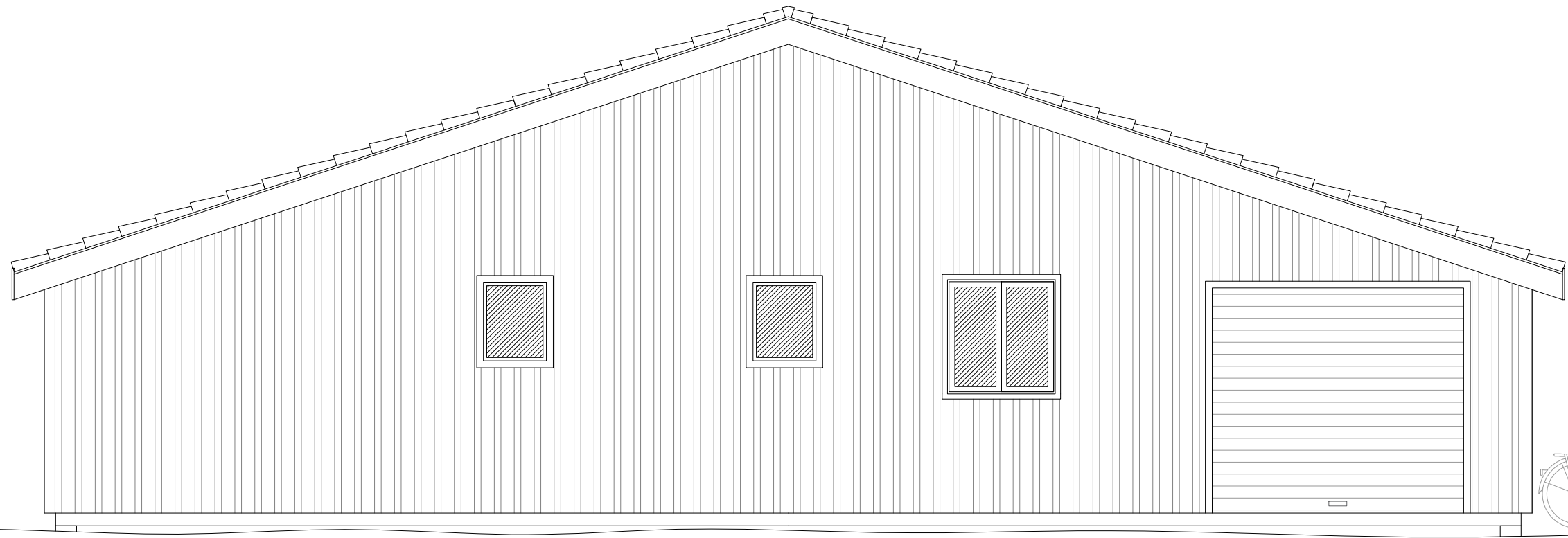
PLAN		A3		1/50	
GIRONDIN Chalet type girondin 3 chambres		Surface habitable :	89,84 m ²	Surface plancher :	97,14 m ²
		Surface taxable de stationnement :	20,67 m ²	Emprise au sol :	161,21 m ²
		Chambre 1 et placard :	7,96 m ²	Salles d'eau :	9,85m ²
		Chambre 2 et placard :	10,64 m ²	WC :	1,29 m ²
		Chambre 3 et placard :	10,17 m ²	Dégagement :	3,22 m ²
		Salon :	37,78 m ²	Terrasse couverte :	27,59 m ²
Cuisine :	8,93 m ²				



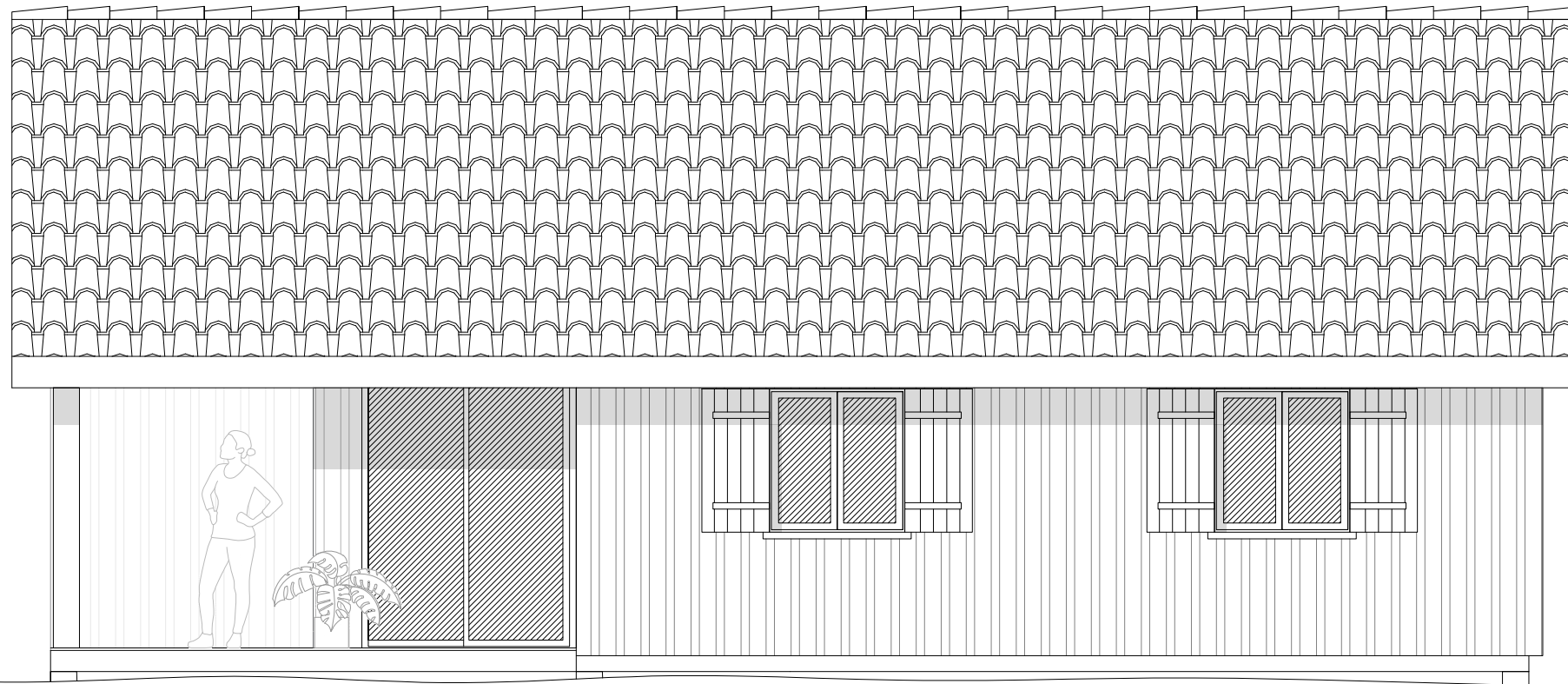




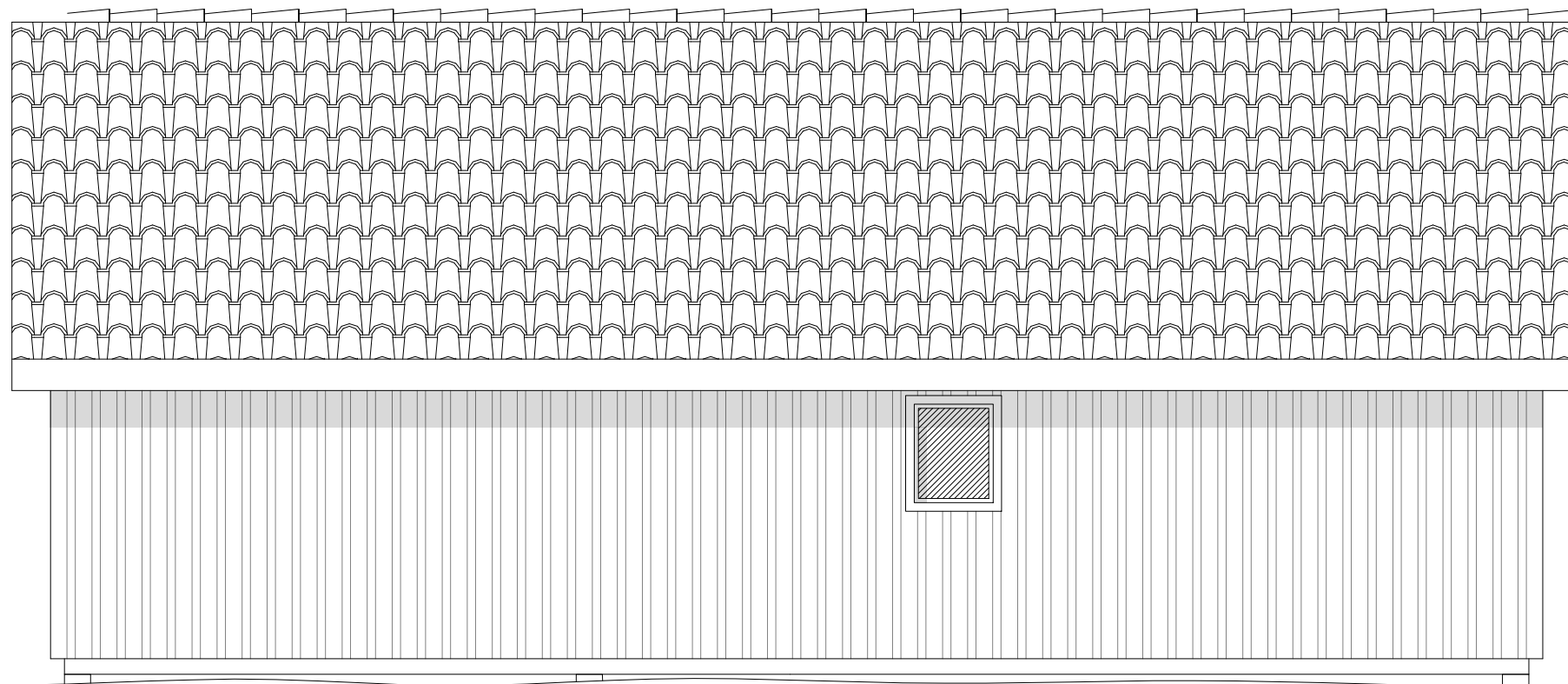
FACADE SUD



FACADE NORD



FACADE EST



FACADE OUEST